



HD-43CF
(Combo)



HD-43C
(Standalone Chartplotter)



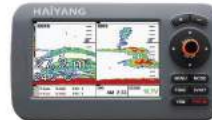
HD-43F
(Standalone Fishfinder)



HD-50CF
(Combo)



HD-50C
(Standalone Chartplotter)



HD-50F
(Standalone Fishfinder)

CHARTPLOTTER SPECIFICATION



LED Backlight Display

Wide color LED Backlight Display is ultra bright for the optimum viewing under direct sunlight.



Internal GPS ANT standard

New Haiyang's internal GPS ANT, accuracy of the position. Real-time head-moving is available.
- DGPS
- SBAS(WAAS, etc.)



Three Chart Systems

Three chart systems C-MAP(SD)/HY Chart(Inter/Exter) are available. The most suitable chart is chosen by the user. Lots of information such as buoys, lighthouses, wrecks and tides are provided.



Micro SD support

Micro SD card memory available to store user data(WPT, mark, track, etc) or upgrade new S/W and chart.



Windows OS

Easy operation with Turbo keys on Windows.



Outdoor use

Water/Dust resistant protect against dust, rain or wave in rough condition.



Multi-language

Selection of languages, Korean, English, Italian, Spanish, Chinese, Taiwanese, Vietnamese, Arabic, Thai, Greek, Turkish, Malay, Indonesian, Arabic, Indian(Hindi, Gujarati) Persian etc.

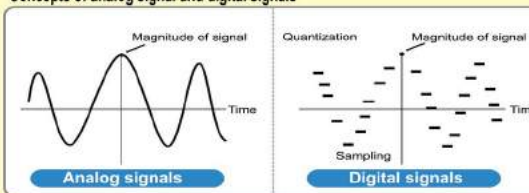


Various AIS information

When connecting AIS, sorting MMSI, Ship's name, nationality, CPA, etc available. Additionally, easy measuring the distance of other ships available with AIS radius.

FISHFINDER SPECIFICATION

Concepts of analog signal and digital signals



In analog FF, the continuous analog signals provide so that there is a limit to filter the noise. For example, in case of 200KHz, analog FF receives data between 180KHz to 220KHz but digital FF can provide the pure 200KHz data only through "Digital Filter" in CPU, which provides the pure data of only 200KHz. Hence, the digital image is the optimum clean and analysis is brilliant.

